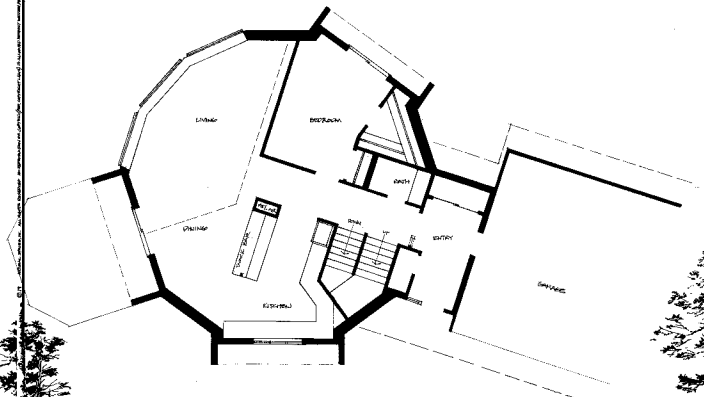


© 1977 by The Geodesic Dome Institute, Inc. All rights reserved. No part of this publication may be reproduced without the written permission of the publisher.



MODEL 1250 HIGH 40' DIAM.

MAIN FLOOR PLAN

40H36

DESIGN & INFORMATION ©1977 BY
JAMES H. HENNINGSEN, ARCHITECT
Geodesic Domes Inc.
17011 BROADWAY, NORTH BAYVIEW, ONT. CANADA M2H 3E7
416-491-1100

SECRET
NO COPY