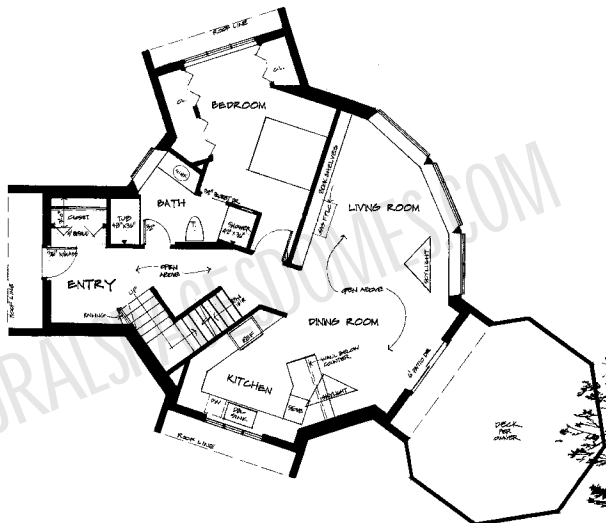


© 1997 Natural Spaces Inc. All rights reserved. An approved floor plan for a geodesic dome. Model 950 High 36' diam. 36HIII. 1/8" = 1'-0".



MODEL 950 HIGH 36' DIAM.

MAIN FLOOR PLAN

36HIII



DESIGN & INFORMATION © 1997 BY  
 JAMES R. FARMER, CEM, JOHNSON'S  
*Natural Spaces Inc.*  
 1705 SHANE BL, NORTH BAYVIEW, MN 55006 612/274-4282

SHEET  
 1-1-00  
 1-2-00  
 1-3-00  
 PAGE  
 12